

**InfraSafe Debris Collection Device**

for Neenah R-3250-006.  
(MnDOT 802 or 805)  
curb boxes



Durable ecoFriendly  
HDPE provides a  
lightweight and strong  
product that can easily be  
re-used for the next project.

Basket design provides  
larger filter area and  
provides easy cleaning,  
reducing overflow  
instances and sediment  
load on the sewer system.



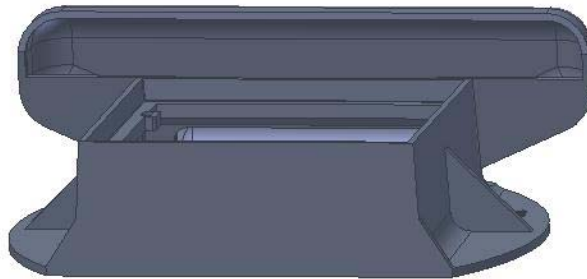
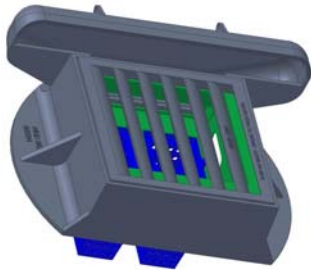
*UltraViolet Resistant*

2 Individual baskets for  
ease of maintenance  
-- approximate full  
weight of 50 lbs.

Flow rates compare to or  
exceed flow rates of  
commonly used grates.



400 micron bag  
available for use  
inside basket



Patent pending  
Royal Enterprises

Product design does  
not interfere with  
load bearing capacity  
of frames.

**Distributed By:**



[www.royalenterprises.net](http://www.royalenterprises.net)

protect **TODAY** by  
building for **TOMORROW**

Filter Area	2.75 ft <sup>2</sup>
Overflow Area	0.4 ft <sup>2</sup>
Maximum Overflow Rate (@7" head)	2.00 cfs
Maximum Overflow Rate (@13" head)	2.90 cfs
Basket Weight (empty)	1 lb
Basket Weight (full - approx.)	50 lbs



Phone: 763-478-2027

*InfraSafe 2' x 2' Debris Collection Device*

*Standard Details*

Plate #  
DCD-22

Rev. Date:  
10-14-05 SEG