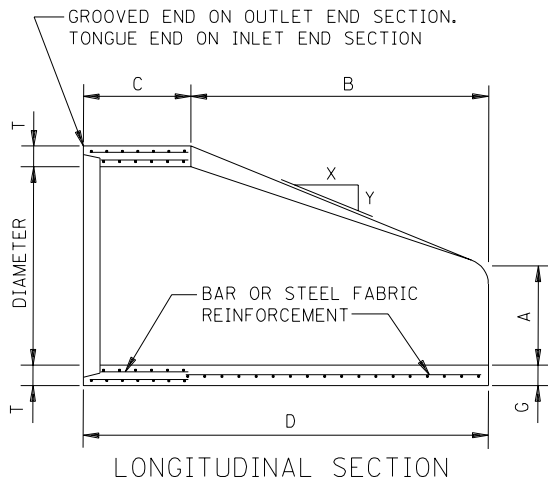


SLOPE DETAIL

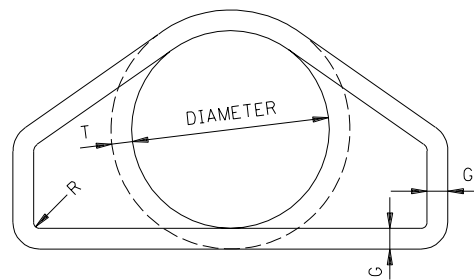
NOTE: REINFORCEMENT AND DESIGN OF END SECTION "C" SHALL CONFORM TO STANDARD REINFORCED CONCRETE PIPE CLASS II, "B" WALL.

ROUNDED EDGE PERMITTED ON SLOPED END "B".

HANDLING HOLES SHALL BE PROVIDED AS NECESSARY FOR HANDLING OF APRONS.



SLOPE = Y TO X



SEE STD PLATE 3000 FOR ADDITIONAL REQUIREMENTS

DIAM.	WEIGHT PER SECTION (LBS.)	APPROX. SLOPE Y TO X	T	A	B	C	D	E	G	R	Ⓢ
12"	530	1 TO 2.4	2"	4"	24"	48-7/8"	72-7/8"	24"	2"	1-1/2"	0.07
15"	740	1 TO 2.4	2-1/4"	6"	27"	46"	73"	30"	2-1/4"	1-1/2"	0.07
18"	990	1 TO 2.3	2-1/2"	9"	27"	46"	73"	36"	2-1/2"	1-1/2"	0.07
21"	1280	1 TO 2.4	2-3/4"	9"	36"	37-1/2"	73-1/2"	42"	2-3/4"	1-1/2"	0.07
24"	1520	1 TO 2.5	3"	9-1/2"	43-1/2"	30"	73-1/2"	48"	3"	1-1/2"	0.07
27"	1930	1 TO 2.5	3-1/4"	10-1/2"	49-1/2"	24"	73-1/2"	54"	3-1/4"	1-1/2"	0.13
30"	2190	1 TO 2.5	3-1/2"	12"	54"	19-3/4"	73-3/4"	60"	3-1/2"	1-1/2"	0.14
36"	4100	1 TO 2.5	4"	15"	63"	34-3/4"	97-3/4"	72"	4"	1-1/2"	0.12
42"	5380	1 TO 2.5	4-1/2"	21"	63"	35"	98"	78"	4-1/2"	1-1/2"	0.15
48"	6550	1 TO 2.5	5"	24"	72"	26"	98"	84"	5"	1-1/2"	0.18
54"	8240	1 TO 2.0	5-1/2"	27"	65"	33-1/4"	98-1/4"	90"	5-1/2"	1-1/2"	0.22
60"	8730	1 TO 1.9	6"	35"	60"	39"	99"	96"	5"	1-1/2"	0.25
66"	10710	1 TO 1.7	6-1/2"	30"	72"	27"	99"	102"	5-1/2"	1-1/2"	0.31
72"	12520	1 TO 1.8	7"	36"	78"	21"	99"	108"	6"	1-1/2"	0.35
78"	14770	1 TO 1.8	7-1/2"	36"	90"	21"	111"	114"	6-1/2"	1-1/2"	0.40
84"	18160	1 TO 1.6	8"	36"	90-1/2"	21"	111-1/2"	120"	6-1/2"	1-1/2"	0.46
90"	20900	1 TO 1.5	8-1/2"	41"	87-1/2"	24"	111-1/2"	132"	6-1/2"	6"	0.51

Ⓢ CONTINUOUS BASIC REINFORCEMENT IN SQ. IN. PER LINEAL FT. FOR SLOPED END "B" (LARGER OF INNER OR OUTER CAGE ON STD. PLATE 3000). FOR WALL THICKNESSES LESS THAN 4", LOCATE REINFORCEMENT AT THE CENTER OF WALL. FOR WALL THICKNESSES 4" AND GREATER, LOCATE REINFORCEMENT WITH A MIN. OF 2" OF COVER MEASURED FROM THE OUTSIDE OF THE WALL.

NOTE: UNLESS SPECIFIED OTHERWISE IN THE PLANS, WHEN AN APRON IS REQUIRED FOR A RUN OF GASKET PIPE (STD. PLATE 3006), THE PRODUCER MAY FURNISH EITHER:

1. AN APRON WITH A STD. PLATE 3006 JOINT, OR
2. AN APRON WITH A STD. PLATE 3000 JOINT AND THE END OF THE STD. PLATE 3006 PIPE CONNECTING TO THE APRON PROVIDED WITH A STD. PLATE 3000 JOINT. THIS JOINT IS TO BE SEALED WITH A PREFORMED MASTIC SEALER.

APPROVED May 8, 1985
R.H. Sullivan
 Assistant Division Director
 Technical Services

STATE OF MINNESOTA
 DEPARTMENT OF TRANSPORTATION
 CONCRETE APRON FOR
 REINFORCED CONCRETE PIPE

SPECIFICATION
 REFERENCE
 2501, 2503
 REVISED
 10-16-2000 A.K.J.

STANDARD
 PLATE
 NO.
 3100G