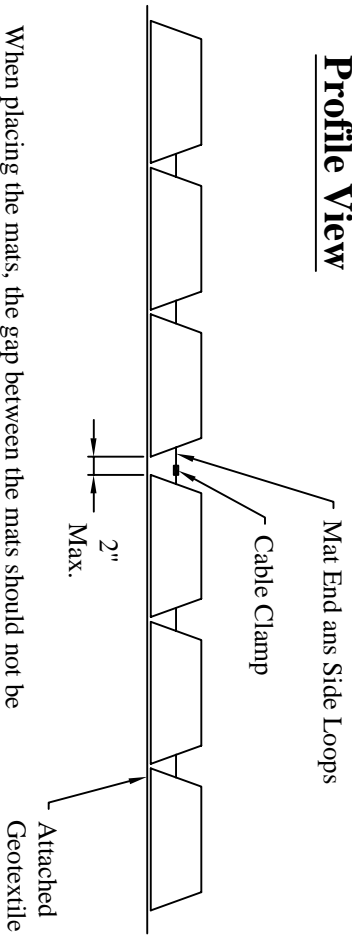
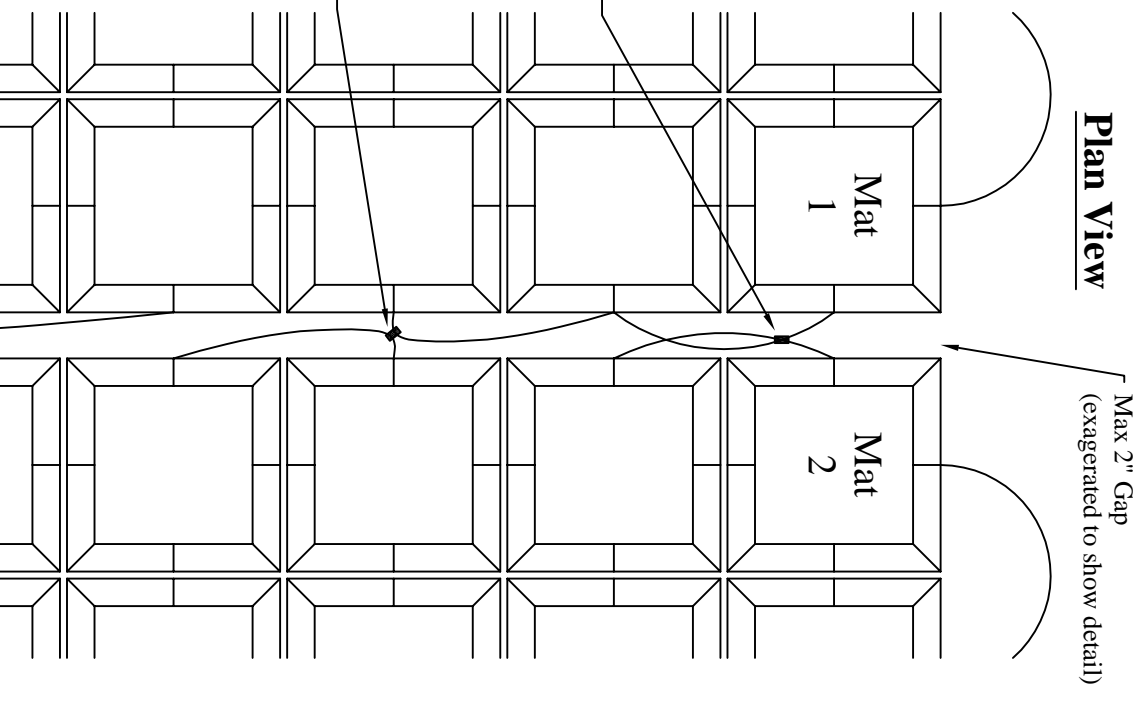


## Profile View



When placing the mats, the gap between the mats should not be any larger than 2". If the mats are placed with a larger than 2" gap, it's recommended to grout the seam between the mats.

## Plan View



### Notes:

- The clamps shall be made of stainless steel.
- Use a nut driver, ratchet, or portable drill to tighten the nuts on the u-bolt. Tighten down to the cover of the saddle. Inspect to assure all nuts are tightened.

pull clamp to end of loops before tightening. (Remove cable slack between mats.) One clamp per pair of loops.

One clamp per pair of loops when opposing loops are staggered.



# Intermat Clamping

## Standard Details

P.O. Box 430 • 30622 Forest Blvd • Stacy, MN 55079 • Ph: 651.462.2130

Plate #

CC-CL1

Rev. Date:

1-30-04 SEG