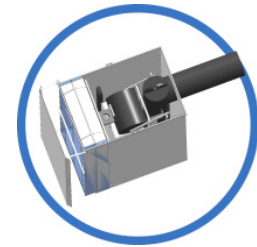
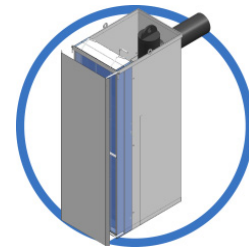
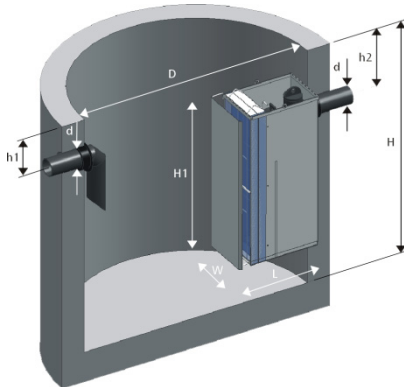


ecoLine-b Installation Guide

ecoLine-b Model Sizes



Tank Dimensions			SS Components			Access Hatch
Flowrate	D*	H*	H1	W	L	Minimum Opening
GPM	ft	in	In	in	in	inches
50	4	59	39	12	20	24
160	6	79	39	18	26	24
320	7	79	43	18	37	24 x 30
630	8	84	49	36	30	42 x 42
790	8 (2ea)	84	49	36	36	42 x 42
1110	10 (2ea)	84	49	36	54	60 x 60

D* and H* are minimum dimensions.

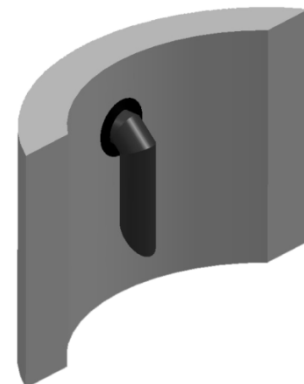
Note: Place manhole access opening directly above filter and spill control valve.

ecoLine-b Installation

Installation of inlet pipe

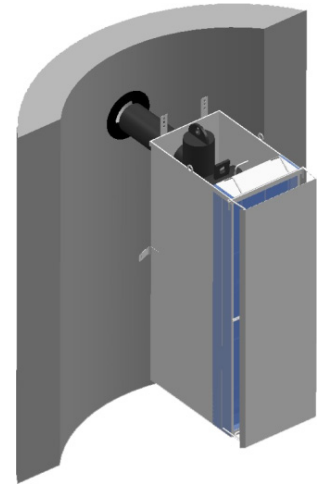
Core hole for inlet pipe at pre-determined elevation and insert oil resistant boot.

Insert HDPE pipe into the boot and tighten clamps to the manufacturer recommended torque for water tight connection.



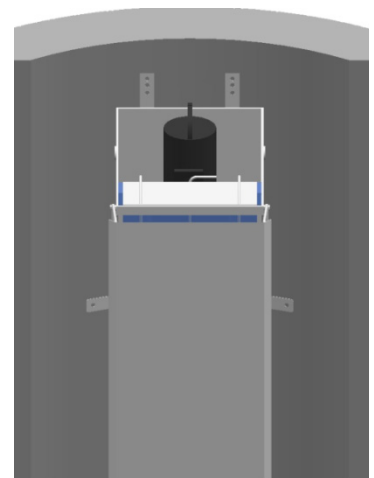
Installation of ecoLine-b outlet structure

Core hole for outlet pipe at pre-determined elevation and insert oil resistant boot.



Insert HDPE effluent pipe into the boot and tighten clamps to the manufacturer recommended torque for water tight connection.

Use the 4 mounting brackets as a template to drill and install 4 anchor bolts to desired depth, making sure not to drill completely through the structure wall. Insert anchor bolts and secure.



Optional Equipment

Protective Lining – ecoLine-b concrete structures can be lined with a cast-in GSE 80 Mil HDPE Studliner. The lining is cast into the concrete during manufacturing and joints are field welded as needed after installation is completed. The liner acts as a secondary containment barrier.